A grayscale architectural rendering of modern buildings. In the center, a tall skyscraper with a grid-like facade rises against a white sky. To the left, a building with a curved, grid-patterned facade is visible. In the foreground, a large, curved structure with a ribbed, shell-like texture dominates the lower half. On the right, a curved walkway with a glass railing and vertical slats is shown. The overall composition is dynamic, with strong geometric lines and curves.

WONYANG
Architects & Engineers Co., Ltd.



WONYANG

Welcome to WONYANG Architects & Engineers

Wonyang believes that buildings can eventually achieve a state of true, natural beauty when they have solid foundations beneath them as they become older. Based on this “back- to-basics ” spirit, we deliver sincerity and earnestness throughout the entire process from planning to construction supervising. With our principle of coexistence, Wonyang endeavors to create a safe and comfortable space for both human beings and nature. We consider a key approach to providing high client satisfaction is improving the environment, fulfilling our clients’ needs with rational, future-oriented creations through the introduction of high-tech techniques and constant research in the newest in technology, and to maximize the harmony between humanity and nature focusing on the interaction and roles of ‘architecture.’ Wonyang in an attempt to bring these ideas to fruition, is operating a comprehensive planning service system established on rationality and diversity, which amplifies the work efficiency of a number of specialists in each of the range of fields. Based on this company spirit, we are trying our best to provide our clients with scientific, innovative space designs for continuous satisfaction, and are hoping to extend our services to the world.

1981

WONYANG Architectural Design Group
Founded

1985 ~ 1990

Chungju Korea Traditional House
Sungbuk-dong Korea Traditional House
Mt. Songak,Jeju-do tourist Development
Bosung High School Library
Gahui-dong Korea Traditional House
Dongsung-dong House
Handok Resort
Daegyo Building
Songpa-dong Building
Macheon-dong Building
Chaewon Plaza
Handok Resort
Nayoon Wedding Hall
Gayoon Wedding Hall
Sihwa Factory

1991 ~ 1995

Namyang Condominium
Doowon College
Dongyang Electronics R&D center
Daeyoo Technical College
Doowon Heavy Industries Factory
Wonsung-dong, Cheonan Apartment
Banghwa Jinro Apartment
Seokgwan-dong Doosan Apartment
Chunghyun School
Sinbang-dong, Cheonan Apartment
Garak-dong Neiborhood Facility
Tongyang Cement
Nayoon Wedding Hall
Songpa NongHyup
SamHee Building
Hawbuk, Jeju Apartment
Dapsipri Neighborhood Facility
Jangwi-dong Neiborhood Facility

1996

WONYANG Architects & Engineers Co. Ltd.
Promoted as Incorporations
Sincheon-dong Mixed-use Building
Seocho-dong Neighborhood facilities
Namhae Telecommunication center
Siheung Sahwa Apartment
Seokgwan-dong Sports Center

1997 ~ 1998

Hwasung Byungjeom Doosan Apartment
Myonmok-dong Doosan Apartment
Construction Materials Laboratory
Shihung Shinhwa Apartment
Woongsan Telecommunication Office
Cheongju Telecommunication Office
Eiljiro Redevelopment
Daejeon Yongoon District Apartment
Geoje KT Training Center
Munbae-dong Sports Complex
Cheonho Officetel
Daechi Officetel
Uiwang-si Gochen-dong Factory
Bundang Sunae-dong Officetel
Air-Forced Club
Kwangjin Community Center
Ilsan Culture Center
Korea Telecom
Sangam District3 Apartment
Yongsan Telecom center

1999

Registered for Construction Supervision Service
Acquired ISO 9001 Certification
Munbae-dong Sports Complex
Cheonho Officetel
Daechi Officetel
Uiwang-si Gochen-dong Factory
Bundang Sunae-dong Officetel
Air-Forced Club
Kwangjin Community Center
Ilsan Culture Center
Korea Telecom
Sangam District3 Apartment
Yongsan Telecom center

2000

New Manufactory of Korea Tobacco & Ginseng
Corporation Youngjoo Branch Office
2002's Worldcup Main Stadium

2001 ~ 2003

Munbae-dong Sports Complex
Cheonho Officetel
Daechi Officetel
Uiwang-si Gochen-dong Factory
Bundang Sunae-dong Officetel
Air-Force Club
Kwangjin Community Center
Ilsan Culture Center
Korea Telecom
Sangam District3 Apartment
Yongsan Telecom center
Yangjae HIBRAND
Korea Inernational Exhibition Center
The National Center for Korean Traditional Performing Art
The Financial Supervisory Service Renovation
Jamsil JInju Apartment
Sadang Younga Apartment
Wonju Musil District5
Incheon Hyangchon Village
Tomihiro Museum
Chang-dong Culture & Sports center
Buchoen Sosa Apartment
Jeju Nohyung Apartment
Anyang Hogae Multiplex
Venture Office Competition
Maetan Highschool
Kangdong Apartment Competition
Jangji Apartment Competition
CompetitionYang-jae Hibrand Competition
Siheung Mok-gam Apartment Competition
Korea Culture & Contents Agency + Korea Film Archives Center
The National Theater for Traditional Performing Art, Pusan.
Jeonhup KOREA Telecommunication Office Competition
Korea International Exhibition Center Competition

2004

Registered for Construction Management Service
Korea National Housing Corporation Daegu Kyongbuk Headquaters
Daejeon Eunhaeng-dong Future-X
Osong Biohealth Technopolis Institue
Eunpyeong Newtown 2District Apartment
Incheon Dongsan Apartment
Geumcheon District Office
Daejeon SeokChon Apartment

2005

Seoul Technopark
Osan Segyo Apartment
Gimpo Sugi Apartment
KORAIL + KRNA New Building
Seongbuk-gu District Office
The Seoul Performing Arts Center
Jeonbuk & Jeonju National University
Sangam District 2 Apartment
Daegu Bangcheon Market Reconstruction
Daegu Daehyeon Apartment
Incheon Nonhyun District 2 Turn-key
Eunpyeong Newtown District 1 Turn-Key
Eunpyeong Newtown District 2 Turn-Key
Seoul Metropolitan Goverment Idea Competition
Seoul Metropolitan Goverment Turn-Key
Busan Jeonggwan Hyunjin Evervill Apartment
Incheon Yongmaru Apartment Competition
Gwangju Asian Culture Complex
Sangbong-dong Complex

2006

Acquired License for
Overseas Construction Business
D.M.C District Landmark Project
Jeonju Inhu Church
Jeongok Prehistory Museum
Hwasung Taean Disrict 3 Apartment
Andong Culture & Art Center
Dongnam District Shopping Mall
Anyang Naengchon Apartment Competition
Gyeongju Culture & Art Center
Paju Unjung District 2 A-20, 21, 24BL
Sungnam Yeosu A-1, 2BL Apartment
Competiton
Busan Mandeok5 Apartment Competition

2007

Korea National Housing Corporation Incheon Headquarters Company
High 1 Resort Hotel Extention & One Stop Service Center
Inceon Hyonghyeon Multipurpose Building
Grand Bleu Resort & Glof Club Jeju
Yongin Lake Side C.C Club House
Seongnam Pangyo Complex
Ansan Energy & Agriculture Hub
Suwon Godeung Apartment
Asan Baebang Apartment
Uiwang Complex
Ansan E-Science Park
Dubai Business Tower
Uz-City
Sinnae Apartment
Seoul National Hospital
Gwanghwamun Square

2008

Established a Branch Office in Beijing, China
Established a Branch Office in New York, USA
Sanghai Apartment&Store
Namyangju Deokso Apartment
Anyang Deokcheon Aartment
Yangsang Sasong B-2, B-3BL Apartment
Seogwipo Total Culture & Art Center
Songdo Apartment
Pungsan Factory
Incheon Seochang 7-1-2,9BL Apartment
Yangju Okjeong A-1BL Apartment
Siheung Mokgam Apartment
Incheon Sipjeong Apartment
Yangju Hoecheon Apartment
KT Data Center
China Life Insurance R&D Center
National Institute for Ecology
Busan Culture & Contents Agency
First Town Community Center In H.C
Sungkyul University Library & Information Center
Cheongju Namju Nammun District Urban Redevelopment Plan
Yongsan International Business District Development
The National Yeongsan River Archaeological Museum
ChungCheongnam-do Provincial Government Building

2009

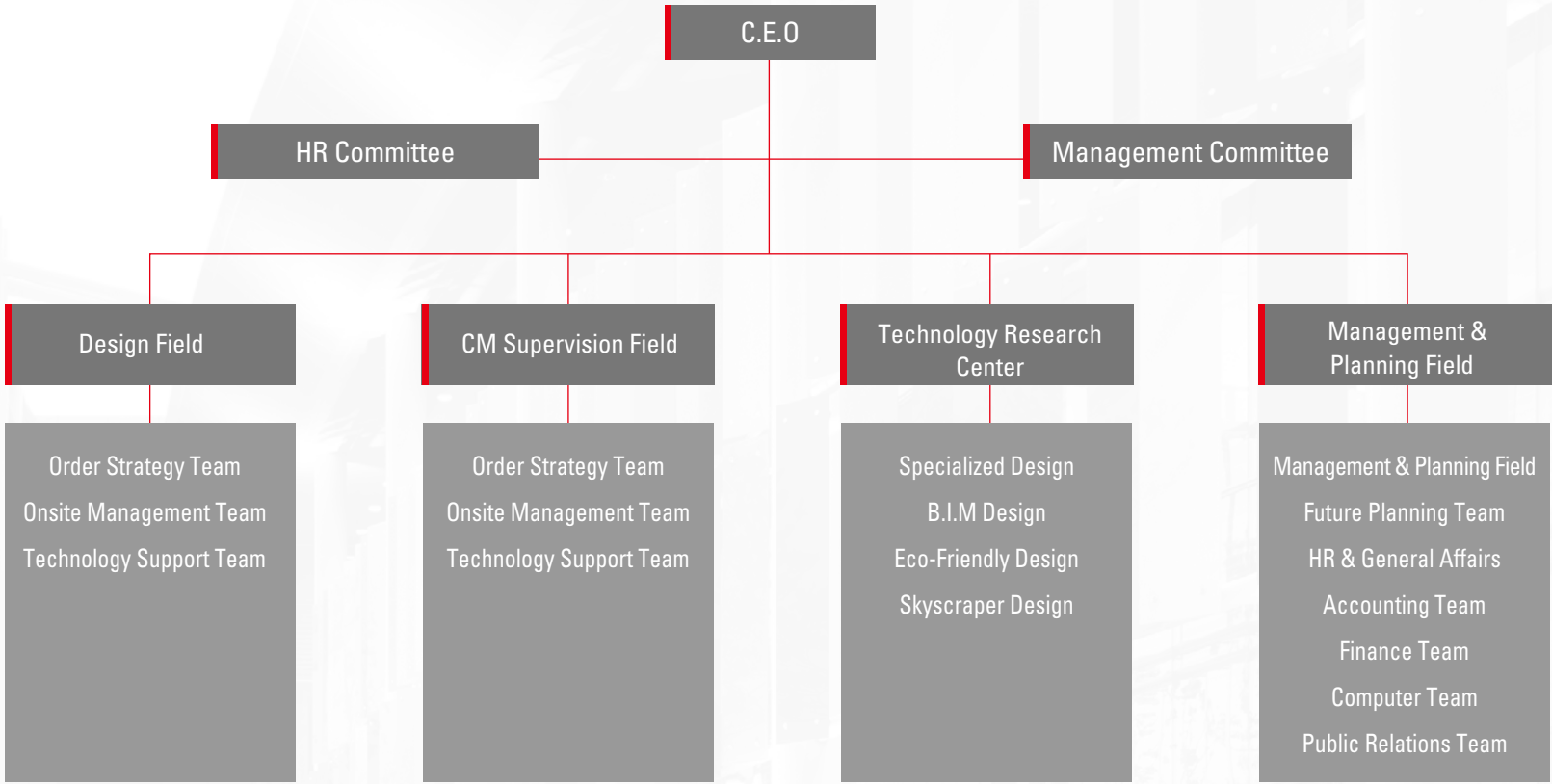
Established a Branch Office in Shenyang, China
Established a Branch Office in Abu Dhabi
Acquired ISO 14001 Certification
Registered for Engineering Service
Seongnam Geumgwang Apartment
Sineun Primary School
Paju Gyoha Community Center
Incheon Geomdan Apartment
Ulsan District Court
Gocheok-dong Culture Center
Kwangju Jiwon District 3 Apartment
Magok ApartmentCheonan Gaon primary school
Dongtan2 new town Business Complex Master plan
Paju Unjeong District3 Apartment
Namyangju District BYULNAE A1-4, 2-1, 7BL Apartment
Gaepo Housing District Development PlanningSeongnam
Sinheung2 Housing Redevelopment Project
National Institute of Nakdong River Biological Resources
National Ecology Educational Facility
Gyeonggi Education Training Institute
Dogok1 Culture Center
Samgaksan High School
Seoul IT Complex
Geoje OP Hotel

2010

Osong Bio-health Science Technopolis
Presidential Citation
Incheon Robot Land
Guro Hangdong Bogumjari Housing Development
Bangbae Culture of General Administration
Central Customs Laboratory and Scientific Service
Hwaseong Dongtan District2 A4, 24BL Apartment
Ulsan Daun District2 B1, 5BL Apartment
Hotel Amir Timur, Uzbekistan
The Center for General Education of
Jinju National University
Jayang4 Urban Environment Improvement Project
Relocation of the Central Bank of
Human Body Resource Center
Jiamusi Binjiang Mingzhu
Guri-Galmae Residential Area Development
Namyangju-Jingeon Bogumjari Housing Development
Al Shankha National Housing Project, Abu Dhabi

2011 ~ 2014

Songpa Wirye Apartment
Health Insurance Review &
Assessment Service Headquarters Office Relocation
Bukmeyeon Gamgye Apartment
Anseong Ayang Housing Site B4BL Apartment
Seongnam Godeung Housing site S2BL Apartment
Korea Creative Agency Headquarters Office Relocation
Arts Council Korea Headquarters Office Relocation
Deokso 6B Area Renewal Project
Pohang Office of Education
Hochiminh City Medical Laboratory Center. Vietnam
Hanjin Shipping Building
Gwanggyo Composite Medical Center
Korea South-East Power Co. Bachelor Enlisted Quaters
Incheon Seochang 9BL Apartment
Re-use Eco Land
Gunsan Naun Apartment Reconstruction
W Hospital in Daegu
Gangnam Central Prugio-city
Banpo Samho4 Apartment Reconstruction
KOLON L.I.N.K West Beyond Imagination
Solar Technology Complex
Jecheon Hwasan Apartment
Gaepo Hansin Apartment
Cheonho1 Urban Environment Improvement Project
Jeju Jungmon ShoppingMall
Kintex C2BL Development Project
Ramada Hotel Jeongseon
Dae-gu Distribution Center of Fishery Products
Gangnam Kukje Apartment
Jinan Public Library
The Catholic University of Korea ST. Vincents Hospital



2011 ~ 2014

Hochiminh City Medical Laboratory Center. Vietnam / Prizewinner
 Deokso 6B Area Renewal Project / Prizewinner
 Songpa Wirye Apartment / Prizewinner
 Health Insurance Review &
 Assessment Service Headquarters Office Relocation / Prizewinner
 Bukmeyeon Gamgye Apartment / Prizewinner
 Anseong Ayang Housing Site B4BL Apartment / Prizewinner
 Seongnam Godeung Housing site S2BL Apartment / Prizewinner
 Korea Creative Agency Headquarters Office Relocation / Prizewinner
 Banpo Samho4 Apartment Reconstruction / Prizewinner
 KOLON L.I.N.K West Beyond Imagination / Prizewinner
 Incheon Seochang 9BL Apartment / Prizewinner
 Re-use Eco Land / Prizewinner
 Gunsan Naun Apartment Reconstruction / Prizewinner
 Hanjin Shipping Building / Prizewinner
 Gaepo Hansin Apartment / Prizewinner
 Cheonho1 Urban Environment Improvement Project / Prizewinner
 The Catholic University of Korea ST. Vincents Hospital / Prizewinner
 Gangnam Kukje Apartment / Prizewinner

2006 ~ 2010

Busan Mandeok Apartment Competition /Prizewinner
 Seongnam Yeosu Apartment Competition /Prizewinner
 Paju Unjeong District 2 Apartment Competition /Prizewinner
 Hwaseoung Teaan Apartment Competition /Prizewinner
 Dongnam District Shopping Mall Competition /Prizewinner
 Korea National Corp. Incheon Headquarters Office Competition /Prizewinner
 Han-nam Performing Hall Competition /Prizewinner
 Asan Bangbe Apartment Competition /2nd Prize
 Inje Barracks Facility & official residence Competition /2nd Prize
 Gwanghwamun Square Design Competition /2nd Prize
 High 1 Resort Hotel Extension & One Stop Service Center
 /Korean Architectural Award[Ministry Award]
 Suwon Godeung Apartment Competition /Prizewinner
 Sinnae Apartment Competition /Prizewinner
 Paju Unjeong Apartment Competition /Prizewinner
 Suwon Homaesil Apartment Competition /Prizewinner
 Yangsan Sasong Apartment Competition /Prizewinner
 Seongnam Yeosu Apartment Competition /Prizewinner
 Incheon Seochang Apartment Competition /Prizewinner
 Gwanghwamun Square Idea Competition /Prizewinner
 Lakeside Country Club House Competition /Prizewinner
 National Institute of Nakdong River Biological Resources Competition /Prizewinner
 Gyeonggi Education Training Institute Competition /Prizewinner
 Gaepo Housing District Development Planning Competition /Prizewinner
 Incheon Geomdan Apartment Competition /Prizewinner
 Magok Apartment Competition /Prizewinner
 Han-nam Misa Apartment Competition /Prizewinner
 Ulsan District Court /Prizewinner
 Goyang Pungdong District 2 Apartment Competition /Prizewinner
 Kwangju Jiwon District 3 Apartment Competition /Prizewinner
 Dogok1 Culture Center Competition /Prizewinner
 Namyangju District Byulnae Apartment Competition /Prizewinner
 Paju Unjeong District3 Apartment Competition /Prizewinner
 Paju Gyoha Community Center Competition /Prizewinner
 Seoul IT Complex /Prizewinner
 Daejeon Eun-Hang-dong, Urban Renewal Competition/Prizewinner
 Namyangju Jingeon District Apartment Competition /Prizewinner
 Guri-Galmae Residential Area Development / Prizewinner
 Namyangju-Jingeon Bogumjari Housing Development / Prizewinner
 Relocation of the Central Bank of Human Body Resource Center / Prizewinner
 The Center for General Education of Jinju National University / Prizewinner
 Hwaseong Dongtan District2 A4, 24BL Apartment / Prizewinner
 Ulsan Daun District2 B1, 5BL Apartment / Prizewinner
 Incheon Robot Land / Prizewinner
 Guro Hangdong Bogumjari Housing Development / Prizewinner
 Bangbae Culture of General Administration / Prizewinner

2000 ~ 2005

Sangam World-Cup Stadium Competition /Prizewinner
 An-Yang Post Service Concentration Office Competition /Prizewinner
 Busan, Kam-Cheon, Fisheries Wholesale Market Competition /2nd Prize
 Munbae-dong Sport Center Competition /Prizewinner
 The National Center for Korean Namdo Performing Art/ Prizewinner
 Air-Force Club Competition/ Prize winner
 The Inhabitants' Hall of Gwang-gin District. Competition /2nd Prize
 Korea Culture & Contents Agency + Korea Film Archives Center/ Prizewinner
 Kangdong Apartment Competition/ Prizewinner
 Jangji Apartment Competition /Prizewinner
 Jeonhup KOREA Telecommunication Office Competition/ Prizewinner
 The National Theater for Traditional Performing Art, Pusan. Competition / Prizewinner
 Siheung Mok-gam Apartment Competition/ Prizewinner
 Korea International Exhibition Center Competition/ Prizewinner
 Yang-jae Hibrand Competition /Prizewinner
 An-Yang Post Service Concentration Office/ Anyang-City Architectural Grand Award
 Incheon Dongsan Apartment Competition /Prizewinner
 Osong Bio-Health Techno Polis /Prizewinner
 Korea National Housing Corp. Daegu Headquarter Office Competition /Prizewinner
 Daejeon Seokchon Apartment Competition /Prizewinner
 Financial Supervisory Service, Addition & Alteration/ 2nd Prize
 Busan Youth Hostel /2nd Prize
 The Central Post Office/ 2nd Prize
 Air-Force Club/Korean Architecture Award
 The National Theater for Traditional Performing Art /Minister Award
 An-Yang Post Service Concentration Office
 /Gyeonggi Province Architectural Grand Award
 2004 Flood Control System [Supervision] /Mayoral Citation
 Incheon Yongmaru Apartment Competition /Prizewinner
 Busan Jeonggwan Hyunjin Evervill Apartment Competition /Prizewinner
 Daegu Daehyeon Apartment Competition /Prizewinner
 Seoul Metropolitan Government Idea Competition /1st Prize
 Osan Segyo Apartment Competition /Prizewinner
 Wonju Doosan WEVE Apartment Competition /Prizewinner
 Sangam District 2 Apartment Competition /Prizewinner
 Daejeon Seokchon-dong, Urban Renewal Competition/Prizewinner
 Kimpo go-chon Apartment Competition /Prizewinner
 Seoul Techno Park /Prizewinner
 Junbuk University Dormitory Competition/Prizewinner
 Eun-pyong Apartment Competition /Prizewinner
 Korea International Exhibition Center /ALA Presidential Award
 Korea International Exhibition Center /ALA Presidential Award
 Korea National Housing Corp. Daegu Headquarter Office
 /Daegu city Architectural Grand Award

1993 ~ 1999

Doowon Institute of Technology Campus Master Plan /Prizewinner
 SeokGwan-dong Doosan Apartment Competition /Prizewinner
 Kong-Rung Apartment Competition /Prizewinner
 Sankye-dong Apartment Competition /2nd Prize
 Busan Hae woon Dae, Super High-Rised Apartment Competition /2nd Prize
 Myeonmok-dong Apartment & Store Complex Competition /Prizewinner
 Construction Materials Laboratory Competition /Prizewinner
 Shihung Shinhwa Apartment Competition /2nd Prize
 Woongsan Telecommunication Office Competition /Prizewinner
 Cheongju Telecommunication Office Competition /Prizewinner
 Eiljiro Redevelopment Competition /Prizewinner
 Hwaseoung City-Hall & City Assembly Competition /Prizewinner
 Kwang-Ju Sang-Mu Apartment Competition /Prizewinner
 Shin Jung Apartment Competition/ Prizewinner
 Myonmok-8dong Government Office/Prizewinner
 Jangan District Hall Competition /Honorable mention
 Kang Nam Post-Office /Prizewinner
 Wonju Musil Apartment Competition /Prizewinner
 Osan Telecommunication Office Competition /Prizewinner
 Sangam District 3 Apartment Competition /Prizewinner
 Daegu Youth Center Competition /Prize for Excellence
 The Ministry of National Defense, Chun-Cheon Apartment Competition /2nd Prize
 Masan Sam-kye Apartment Competition /2nd Prize



WONYANG

Wonyang provides total design solution to grow up the value of buildings with world leading class design identity and technology.

ARCHITECTURE DESIGN

Preliminary Design

Process that make project's starting strategies with site survey, programming, money flow and schedule planning

Schematic Design

Process that confirm project's basic design with scale, form, function, materials, est.

Design Development

Process that complete project's basic system for adapt design concept to construction documents work

Construction Documentation

We complete all needed drawings for construction such as architecture, structure, firefighting, landscape, civil engineering. Additionally, we provide time schedule, specification, and construction cost estimation.

Construction Administration

Wonyang evaluates completion degree of building construction and provide continuous building management service by adapting users demands.

Urban Planning of Wonyang commence from social responsibility to make sustainable urban space. And Wonyang with strongly advanced experiences, upgrade human life quality by promoting balanced and stable urban development

Master plan

Wonyang proposes a balanced systematic urban development planning with longrange development strategy

Urban Planning

Wonyang makes the possibility for sustainable management and development by providing with well arranged infrastructure, buildings, landscape in urban functional and artistic development

Architectural Landscape Design

Wonyang creates the harmony of urban, nature and architecture by integrated comprehension and design of physical urban spaces.

Urban Redevelopment

Urban redevelopment, arrangement, residential environment redevelopment will give a new fresh life on the city by developing retarded district and unstable old building

WONYANG

All Wonyang producing projects aim to provide harmonious and happy human life and to minimize energy consumption by collecting natural live power and developed human technology.



WONYANG

Wonyang has strategic design skills to get the most updated and exact design like B.I.M system. It make it possible to manage all integrated information from the concept design to construction for best result of building construction



WONYANG

Wonyang has overseas branches in New York, Beijing, and Abu Dhabi for getting closer to the global client who needs best design solution and consulting.





Location	: Mangun-myeon Muan-gun Jeollanam-do
Use	: Commercial facility
Site Area	: 2,453,000.00 m ²
Bldg. Area	: 23,469.98 m ²
Gross Floor Area	: 42,991.37 m ²
Bldg. Coverage Ratio	: 0.96 %
Gross Floor Ratio	: 1.60 %
Bldg. Scale	: 1 underground level + 10 stories
Structure	: S.C, truss
Exterior Finish	: Exposed concrete, THK150mm PC-PANEL

Mooan Airport was designed to be the gateway to the world, opening the era of the west coast, and as a symbolic space for "Voyage towards the New World". This project endowed the symbolism of 'connecting the past with the future' and 'voyage to the new future' by shaping the structures into the form of traditional Korean ship. Moreover, the project sought to transcend the existing closed-up image of airport through assertive usage of glasses as well as visual connection between various functions. The ceiling of the airport was designed by modifying the shape of eaves of traditional Korean houses by reflecting the linearity that implies structural rationality. In addition, modularized floor plan not only improves flexibility and constructability of future expansion but also creates explicit handling of human traffic path.

Mooan Airport



Korean International Exhibition Center (KINTEX) is established at a location where the new urban center of Ilsan encounters the lake park. KINTEX is the largest exhibition center in Korea specializing in international trading with the goal of becoming the representative venue in Northeast Asia. The single story exhibition center with height of 15m has no sunlight windows can hold exhibition of large and heavy products as well as large capacity events. It employs variable plans for exhibition partitioning to enable holding of partitioned and multipurpose exhibitions. Subsidiary facilities, outdoor exhibition hall, rest spaces and plaza are always open to the regional residents and offers vivacious cultural venue through holding of diversified events.

Location	: 2306 Daehwa-dong Ilsan-gu Goyang-City Gyeonggi-do
Use	: Culture & Assembly, Store & Business facility
Site Area	: 241,586.00 m ²
Bldg. Area	: 89,210.07 m ²
Gross Floor Area	: 116,571.46 m ²
Bldg. Coverage Ratio	: 37.93 %
Gross Floor Ratio	: 47.02 %
Bldg. Scale	: 1 underground level + 3 stories
Structure	: RC, SRC
Exterior Finish	: THK3 aluminum complex panel, THK24 low-e pair glass

Korea Inernational Exhibition Center



The Dogok Cultural Center was created as a single jewel that highlights the city by being situated in the central portion of and containing the cultures of Dogok-dong in which residential, commercial and work facility groups are densely concentrated. The memory of the past, “Dol”, which is the origin of the term Dogok, is restored through the mass, and cultural icon that combine the future of Dogok was created by containing the splendid cultural space within the empty space in the smooth and dynamic ‘shape of C’ in order to assertively bring in new culture. Cultural Center, in considerations for the characteristics of the land located in the areas of overlap between urban center and nature, focuses on growth and change, and connects the axis of urban center and nature accordingly. Composite resident center that provides administrative, cultural and welfare services plays the role of central location of cultural and artistic activities of the regional residents by offering place of rest in the midst of city with the role and theme as the venue of community that can combine the regional society. Visual and spatial interference of context of existing city is minimized by securing external spaces composed with minimized volume that can contain diverse range of activities, and venue for meetings amongst residents was proposed by composing 3-dimensional open square in which diversified activities are carried out.

Dogok Digital Public Library



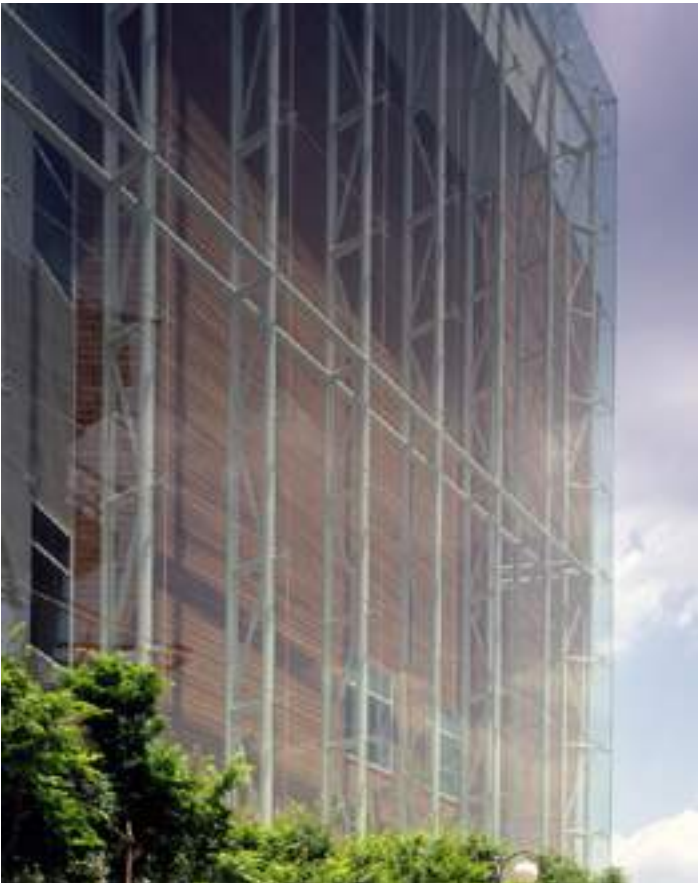
Location	: 892-6 Dogok-dong Gangnam-gu Seoul
Use	: Office & Culture, Exhibition, Convention Facility
Site Area	: 2,812㎡
Bldg. Area	: 1,320.12㎡
Gross Floor Area	: 14,443.00㎡
Bldg. Coverage Ratio	: 46.94%
Gross Floor Ratio	: 145.97%
Bldg. Scale	: 5 underground level + 6 stories
Structure	: SC, RC
Exterior Finish	: Aluminum complex panel, T24 Color pair glass, Wood panel



Korea Culture & Contents Agency
Korea Film Archives Center

Location	: C3 DMC Mapo-gu Sangam-dong Seoul-City
Use	: Office & Culture, Exhibition, Convention facility
Site Area	: 9,917.00 m ²
Bldg. Area	: 5,894.87 m ²
Gross Floor Area	: 59,625.97 m ²
Bldg. Coverage Ratio	: 59.44 %
Gross Floor Ratio	: 368.16 %
Bldg. Scale	: 4 underground level + 14 stories
Structure	: SC, RC
Exterior Finish	: Wood panel, Aluminum complex panel

Cultural Contents Complex Center is located within the DMC complex. This Center induced continuity of roads and openness of the upper floors through designation of dualized structural line of the lower floors and upper floors. Transitional space between the upper floors and lower floors was proposed as empty formless space. The empty space filled with light and wind will maximize the continuity of roads through visual openness, and will be filled by people seeking to enjoy leisure in the midst of urban center.





Air Force Club

Location	: 1245 Singil-dong Yeongdeungpo-gu Seoul-city
Use	: Education, R&D, Culture, Exhibition facility
Site Area	: 7,077.62 m ²
Bldg. Area	: 2,608.42 m ²
Gross Floor Area	: 14,918.53 m ²
Bldg. Coverage Ratio	: 36.85 %
Gross Floor Ratio	: 118.97 %
Bldg. Scale	: 2 underground level + 7 stories
Structure	: RC, SC
Exterior Finish	: Aluminum Sheet, Exposed concrete

Air Force Club agitates the ambience of stereotypes buildings in the surrounding through dynamic formative features that contains form of air current. Atrium located in the frontal aspect of the Club displays the image of Air Force that soars into the new millennium and transparent sky through motif of the image of 'Gliding' and 'Wing' that symbolizes the Air Force. Arrangement plan includes setting of pedestrian axis from the square at the front of the land to the internal aspect, ceremonial and banquet hall that requires sense of openness at the frontal portion, and accommodation building that considers noise and views at the rear aspect of the Club. Gallery in the rooftop garden in the 2nd floor, as the buffer space between the banquet hall and accommodation building, is directly connected from the 8m road on the right side, and offered as cultural and exhibition venue for the residents of the regions.



WONYANG

Location : Munjeong-dong Songpa-gu Seoul-City
Use : Mixed-use/Complex
Site Area : 41,810.00 m²
Bldg. Area : 25,067.00 m²
Gross Floor Area : 426,048.00 m²
Bldg. Coverage Ratio : 59.96 %
Gross Floor Ratio : 587.13 %
Bldg. Scale : 5 Underground Levels + 11 stories
Structure : RC Structure

Garden5 LIFE was planned as shopping mall with easy access from all locations and ability to draw in shoppers. Greenery axis that connects the green zone of the distribution complex to the entire complex is linked with the pedestrian axis that connects Jangji Station, bus station, Jangjicheon and Block 'B'. A large square located in the center of the cluster of 4 buildings, as the landmark space at which diverse range of events including 5-day market and discount events for each commercial outlets, is the central space that guides the users to each themed pavilion. The 4 themed pavilions with elevation with 4 themes, namely, fabric, digital, speed and rhythm, was designed to elevate the level of recognition from many aspects, and to accomplish harmony with the surrounding. Seoul List Square, which will be the venue of diverse range of events, Spring Plaza connected with the subway, underground pedestrian mall, the Step Park, linked with the embankment of stream, and Four Seasons Park established by turning the entire rooftop areas into green zone will become the symbol of living and dynamic shopping mall and venue of festivals with wide range of images.

Dongnam District Shopping Mall





Gimpo Sugi Apartment

Location	: Shinkok-ri Gochon-myeon Gimpo-si Gyeonggi-do
Use	: Housing
Site Area	: 169,185.20 m ²
Bldg. Area	: 33,962.75 m ²
Gross Floor Area	: 511,661.45 m ²
Bldg. Coverage Ratio	: 20.58 %
Gross Floor Ratio	: 214.11 %
Bldg. Scale	: 2,605 Units
Structure	: RC structure

'Apartment in Sugi Village, Kimpo' is a self-sufficient ecological city in which the ecosystem in the surrounding coexists with the convenience of the city. In this project, while we assertive utilized the ecological scenery including the mountainous regions and Gochon neighboring park in the west, Cheondoong neighboring park in the north, and Dabocheon in the east, which are gifts of nature, that surround the project site, we planned rationalized space through composition of human-centered spaces. With four seasons as the theme and elevation coloring plan developed with the consultation of Jean Philippe Lenclos, a globally renowned color designer, contributed towards maximization of harmony as an ecological complex by enabling beauty of the nature to be extended to the structures. More than 96% of all the residential units were design to front the south, and view was maximally secured by designing the balcony in polygonal structure.





2002's Worldcup
Main Stadium

Location	: 515 Seongsan-dong Mapo-gu Seoul-City
Use	: Sports, Commercial facility
Site Area	: 216,712.00 m ²
Bldg. Area	: 59,747.24 m ²
Gross Floor Area	: 133,833.64 m ²
Bldg. Coverage Ratio	: 27.57 %
Gross Floor Ratio	: 51.97 %
Bldg. Scale	: 1 underground level + 6 stories
Structure	: Stand(PC,SC) / Roof(Truss+Tensile)
Exterior Finish	: Teflon Fabric, Exposed concrete

This project located in Sangam-dong, Seoul, was used as the main stadium for Korea-Japan World Cup 2002, and is the largest futuristic multipurpose soccer stadium with seating capacity of 66,806. Weight of the roof, whose line invokes the image of bangpai (rectangular shield shaped) kite and Hwangpo (royal robe) sailing boat, and emphasized free curvature and structural aesthetics in order to create characteristic beauty of Korea, was minimized by suing Membrane Structure System. Various cultural facilities including multiplex theater, convention center and shopping center were planned through proposal for program that considers utilization of the facility following conclusion of the World Cup games in order for the visitors to acquire diverse range of experiences in addition to soccer games. Efforts were put in to seek progress of the facility as venue for utilization of leisure time by linking with Haneul (sky) Park and DMC.



Construction of club house for Lake Side C.C. in Yongin was a project to correct various problems including crisscrossing of human traffic path of existing facilities, organization of facilities irrelevant to the golf course, congestion due to concentration of players at the starting point of the West Course, and 2-dimensional and 3-dimensional layout that is closed to the nature, and parking lot plan that impairs scenery. In order to solve these problems, traffic path for members and employees were thoroughly segregated and separation of facilities for each course was carried out. Moreover, key themes for each course, namely, Light for the East Course, Sound for the South Course and Aroma for the West Course, was set and characteristic interior design for each course was proposed. Land on which the clubhouse is situated has basin-type topography, thereby creating problems related to lighting in some of the regions of West Course with low elevation. This was overcome through natural cross-sectional planning that complies with the natural topography. Through proposal of 3-stage development plan, project plan that can pursue construction while maintaining the maximal harmonious usage of the club by members was carried out.

Location	: Lake C.C,Mohyeon-myeon, Yongin Si Cheoin-gu, Gyeonggi-Do
Use	: Sports
Site Area	: 4,195,855.00 m ²
Bldg. Area	: 5,171.85 m ²
Gross Floor Area	: 13,634.59 m ²
Bldg. Coverage Ratio	: 0.12 %
Gross Floor Ratio	: 0.19 %
Bldg. Scale	: 1underground 2stories
Structure	: R.C/ S.C
Exterior Finish	: lime stone, T-12 Titanium panel, High strength wood panel



Yongin Lake Side C.C Club House



Central Bio-Bank is located within the Osong Bio-Science Center in Gangwoi-myeon, Chungwon-gun inChoongchungbuk Province. The corresponding land is the land earmarked for Korea Center for Disease Control and Prevention and neighbors the frontal road of the land to be used for transfer of the national policy complex. The land is composed of gently sloping grounds with height difference of less than 2m. This plan focused on utilization of the flow of the topography and maximally securing of the function and safety of the research institute. Load was minimized by allocating storage facilities between the 2 facilities in order to ensure safety of storage facility and pleasant research facility, and work environment was maximized through explicit zoning. In addition, efforts were put in for saving of energy and improvement of welfare of researchers through arrangement to face south and open courtyard. Human traffic path plan that considers linkage of works with national policy complexes and harmonious usage of the storage facilities was established.



National Biobank of Korea



Location	: Cheongwon-gun Chungcheongbuk-do, Korea
Use	: Health care/Hospitality
Site Area	: 16,529.00 m ²
Bldg. Area	: 5,319.50 m ²
Gross Floor Area	: 12,225.20 m ²
Bldg. Coverage Ratio	: 32.18 %
Gross Floor Ratio	: 68.38 %
Bldg. Scale	: 1 Underground Levels + 3 Stories
Structure	: RC Structure
Exterior Finish	: Color Pair glass, Metal Panel

High 1 Resort Hotel project involves planning of expansion of 5-star hotel with 250 rooms and convention center with seating capacity for 2,000. Efficiency in utilization of land was elevated through linkage with each horizontal function with the existing hotel and insufficient available land and inclined land was maximally secured through 3-dimensional planning. Explicit segregation of space and human traffic path for each facility was achieved through vertical zoning for each function, and efficiency in convenience of users and management operation was achieved. Maximum view was secured for each room in line with the quality of the hotel as a well known brand name hotel, and high quality and differentiation was induced by minimizing interference with the existing hotel. In addition, the elevation of the hotel was designed with the motif of precious and beautiful jewelry.

- Location : 242 Sabuk-ri Sabuk-eup Jeongseon-gun Gangwon-Do
- Use : Office & Hotel
- Site Area : 40,453 m²
- Bldg. Area : 9,173.61 m²
- Gross Floor Area : 76,358.29 m²
- Bldg. Scale : 250 rooms / 2000 persons Convention Center
- Structure : SC, SRC

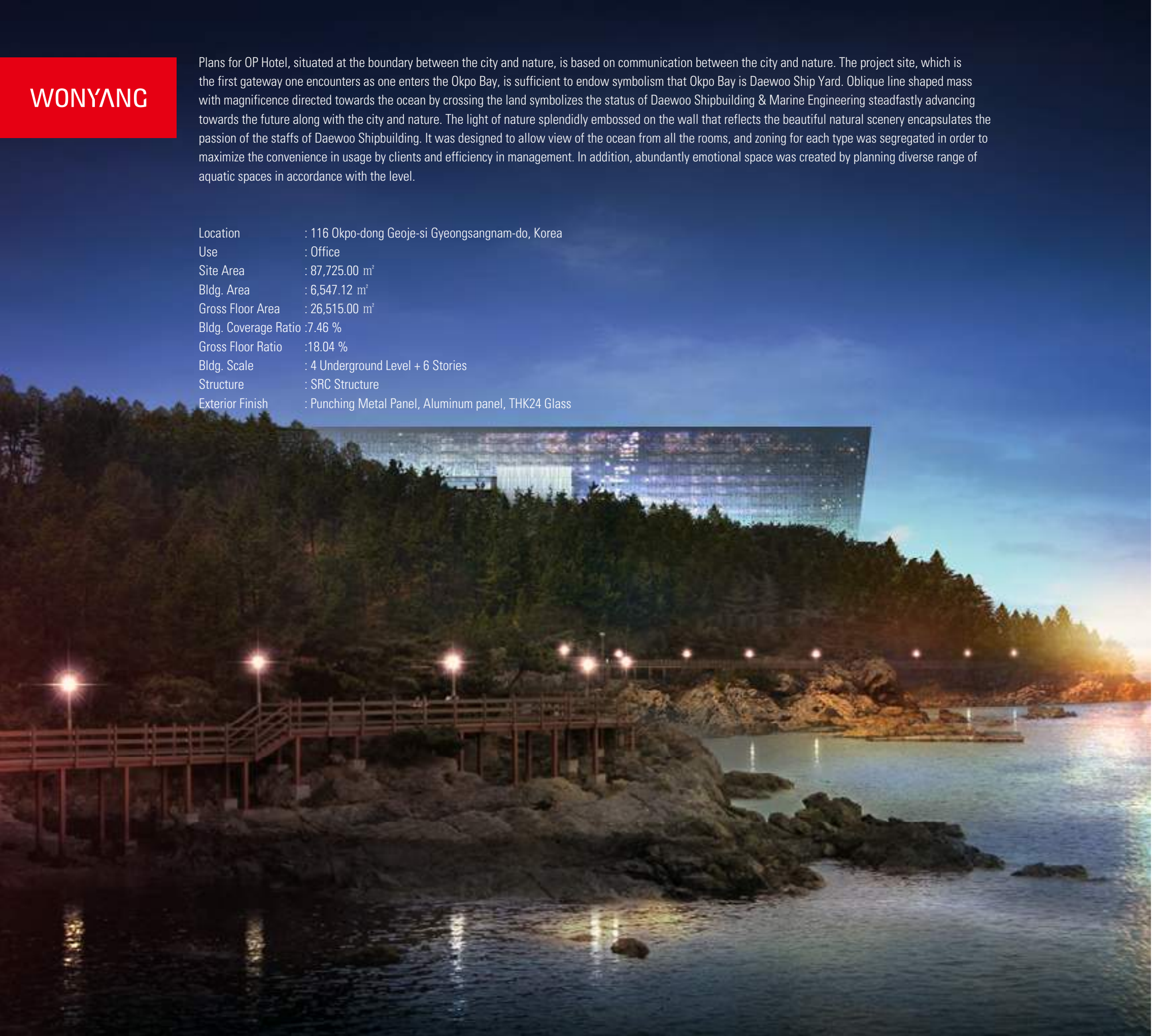


High 1 Resort Hotel Extention & One Stop Service Center



Plans for OP Hotel, situated at the boundary between the city and nature, is based on communication between the city and nature. The project site, which is the first gateway one encounters as one enters the Okpo Bay, is sufficient to endow symbolism that Okpo Bay is Daewoo Ship Yard. Oblique line shaped mass with magnificence directed towards the ocean by crossing the land symbolizes the status of Daewoo Shipbuilding & Marine Engineering steadfastly advancing towards the future along with the city and nature. The light of nature splendidly embossed on the wall that reflects the beautiful natural scenery encapsulates the passion of the staffs of Daewoo Shipbuilding. It was designed to allow view of the ocean from all the rooms, and zoning for each type was segregated in order to maximize the convenience in usage by clients and efficiency in management. In addition, abundantly emotional space was created by planning diverse range of aquatic spaces in accordance with the level.

Location	: 116 Okpo-dong Geoje-si Gyeongsangnam-do, Korea
Use	: Office
Site Area	: 87,725.00 m²
Bldg. Area	: 6,547.12 m²
Gross Floor Area	: 26,515.00 m²
Bldg. Coverage Ratio	: 7.46 %
Gross Floor Ratio	: 18.04 %
Bldg. Scale	: 4 Underground Level + 6 Stories
Structure	: SRC Structure
Exterior Finish	: Punching Metal Panel, Aluminum panel, THK24 Glass



Geoje OP Hotel





Gaepo Housing District Development Planning

Location : Dogok-dong, Gaepo-dong, Irwon-dong,
Kangnam-gu Seoul-city
Site Area : 349,001 m²

This project aims to lead environment-friendly residential culture and establish composite residential city with green movement that creates diverse urban vivacity. This project will enhance the status as urban type residential development linked with the urban center in Gangnam-gu, establishes of nature-friendly city that utilizes abundant natural resources including Yangjecheon and Daemo Mt., establishes active road-centered city through provision of diverse range of urban amenities and programs, and establishes integrated space and scenery in the surrounding natural environment and urban center. The direction of regeneration of the city includes composite usage of land that can cope with residential, commercial, composite and locale characteristics of urban structure, and creation of sustainable ecology and energy friendly residential complex within urban center units through utilization of green zone network and waterside spaces.



Jinju National University wanted to construct comprehensive educational center that symbolizes the gateway that connects the 100 years of the past with the 100 years of future at the entrance of the university. Wonyang Architects designed the Center under the design concept of Link Gate at which the historical features of the past, present and future coexist. Existing front gate of the University and old trees were preserved, and the Center was designed as a sustainable energy saving type smart green building. Moreover, open-type square that can accommodate diverse range of cultures and contents as well as multipurpose auditorium where internal aspects are connected to external aspects as one are included. It is hoped that this comprehensive educational center of Jinju National University will be recognized as a landmark that represents the future of Jinju and become an optimal venue at which communication with regional residents is accomplished.

Location	: 150 chil-am dong Jinju-city Gyeongsang Nam-Do
Use	: Education, R&D facility
Site Area	: 14,423.75 m ²
Bldg. Area	: 3,510.43 m ²
Gross Floor Area	: 15,804.60 m ²
Bldg. Coverage Ratio	: 24.34%
Gross Floor Ratio	: 103.31%
Bldg. Scale	: 1 underground levels + 15 stories
Structure	: Metal panel, Color Double Glazing, Granite stone
Exterior Finish	: RC, SC



Jinju National University Education building



Jinju National University wanted to construct comprehensive educational center that symbolizes the gateway that connects the 100 years of the past with the 100 years of future at the entrance of the university. Wonyang Architects designed the Center under the design concept of Link Gate at which the historical features of the past, present and future coexist. Existing front gate of the University and old trees were preserved, and the Center was designed as a sustainable energy saving type smart green building. Moreover, open-type square that can accommodate diverse range of cultures and contents as well as multipurpose auditorium where internal aspects are connected to external aspects as one are included. It is hoped that this comprehensive educational center of Jinju National University will be recognized as a landmark that represents the future of Jinju and become an optimal venue at which communication with regional residents is accomplished.

Location	: 150 chil-am dong Jinju-city Gyeongsang Nam-Do
Use	: Education, R&D facility
Site Area	: 14,423.75 m ²
Bldg. Area	: 3,510.43 m ²
Gross Floor Area	: 15,804.60 m ²
Bldg. Coverage Ratio	: 24.34%
Gross Floor Ratio	: 103.31%
Bldg. Scale	: 1 underground levels + 15 stories
Structure	: Metal panel, Color Double Glazing, Granite stone
Exterior Finish	: RC, SC

Jinju National University Education building





Ansan E-Science Park

Location : Danwon-gu Ansan-si Gyeonggi-do, Korea
 Use : Mixed-use/Complex
 Site Area : 204,600.00 m²

'S-project' is composed of new recyclable energy related education program and entertainment spaces with maritime as the theme, and will play the role of venue for edutainment at which visitors can experience and enjoy Clean Energy and Ecology. The project will also present future-type residential models into which environmentfriendly advanced technologies are concentrated, and expand the domain of cultural experience in new paradigm with maritime cultural resources as the theme. This planned estate not contains research facilities but also is a venue at which diverse range of programs coexists including tourism facilities and maritime leisure facilities through promotional pavilion to promote utilization of environment-friendly maritime energy, and will enable visitors to personally experience clean maritime energy.





2014'
The Catholic University of Korea ST. Vincents Hospital
1'st Prize Winner



2014'
Dae-gu Distribution Center of Fishery Products
Planning1'st Prize Winner



2014'
Jinan Public Library
1'st Prize Winner



2013'
Solar Technology Complex
1'st Prize Winner



2013'
Korea South-East Power Co. Bachelor Enlisted Quarters
1'st Prize Winner



2012'
Incheon Seochang 9BL Apartment
1'st Prize Winner



2012'
Re-use Eco Land
Planning1'st Prize Winner



2011'
Deokso 6B Area Renewal Project
1'st Prize Winner



2011'
Pohang Office of Education
1'st Prize Winner



2011'
Bukmyeon Gamgye Si-Young Public Apartment for rent



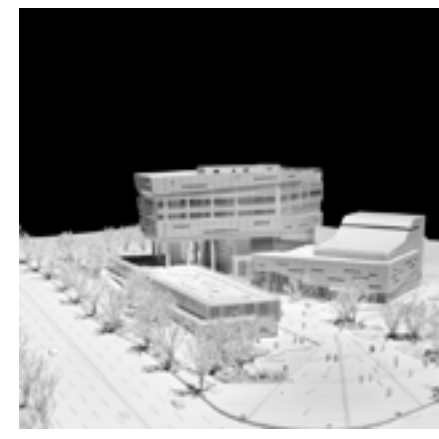
2009'
Incheon Geomdan Apartment
1'st Prize Winner



2009'
Gaepo Housing District Development
Planning1'st Prize Winner



2009'
Magok Apartment
1'st Prize Winner



2009'
Paju Gyoha Community Center
1'st Prize Winner



2009'
Dongtan2 new town Business Complex Master plan



2010' Namyangju Jingeon District Apartment
1'st Prize Winner



2010' Guri Galmae Apartment
1'st Prize Winner



2010' National Biobank of Korea
1'st Prize Winner



2010' Jinju National University Education building
1'st Prize Winner



2009' Kwangju Jiwon District 3 Apartment
1'st Prize Winner



2009' National Ecology Educational Facility



2009' National Institute of Nakdong River Biological Resources
1'st Prize Winner



2009' Ulsan District Court
1'st Prize Winner



2009' Gocheok-dong Culture Center



2009' Gyeonggi Education Training Institute
1'st Prize Winner



2009' Samgaksan High School



2009' Namyangju District BYULNAE Apartment
1'st Prize Winner



2009' Dogok1 Culture Center
1'st Prize Winner



2009' First Town Community Center In H.C



2009' Seongnam Geumgwang Apartment



2009'
Cheonan Gaon primary school



2009'
Geoje OP Hotel



2009'
Paju Unjeong District3 Apartment
1'st Prize Winner



2009'
Seoul IT Complex
1'st Prize Winner



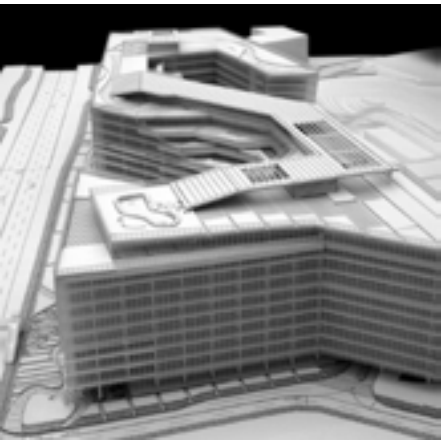
2009'
Sineun Primary School



2009'
Seongnam Sinheung Housing Redevelopment



2008'
Busan Culture & Contents Agency



2008'
Pungsan Factory



2008'
Yangsan Sasong B-2, B-3BL Apartment
1'st Prize Winner



2008'
Incheon Seochang 7-1-2,9BL Apartment
1'st Prize Winner



2008'
National Institute for Ecology



2008'
China Life Insurance R&D Center



2008'
Yangju Hoecheon Apartment
1'st Prize Winner



2008'
Seogwipo Total Culture & Art Center
1'st Prize Winner



2008'
Namyangju Deokso Apartment
1'st Prize Winner



2008'
Sungkyul University Library & Information Center
1'st Prize Winner



2008'
ChungCheongnam-do Provincial
Government Building



2008'
The National Yeongsan River
Archaeological Museum
1'st Prize Winner



2008'
Shanghai Apartment&Store



2008'
Yongsan International Business
District Development



2008'
Anyang Deokcheon Aartment
1'st Prize Winner



2008'
Songdo Apartment



2008'
Cheongju NamjuNammun District
Urban Redevelopment Plan



2008'
Yangju Okjeong A-1BL Apartment
1'st Prize Winner



2008'
Siheung Mokgam Apartment
1'st Prize Winner



2008'
Incheon Sipjeong Apartment
1'st Prize Winner



2008'
KT Data Center



2008'
High 1 Resort Hotel Extention
& One Stop Service Center
1'st Prize Winner



2007'
Gwanghwamun Square Design Competition
2'nd Prize Winner



2007'
Grand Bleu Resort & Glob Club Jeju



2007'
Suwon Godeung Apartment
1'st Prize Winner



2007'
National Seoul Medical center



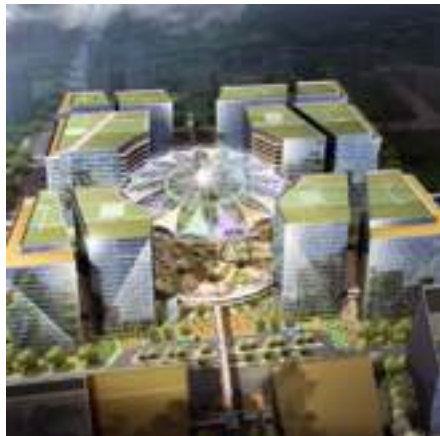
2007'
Sinnae Apartment
1'st Prize Winner



2007'
Incgeon Hyonghyeon Multipurpose Building



2007'
Dubai Business Tower



2007'
Seongnam Pangyo Complex



2007'
Uz-City



2007'
Korea National Housing Corporation
Incheon Headquarters Company
1'st Prize Winner



2007'
High 1 Resort Hotel Extension
& One Stop Service Center
1'st Prize Winner



2007'
Asan Baebang Apartment
2'st Prize Winner



2007'
Ansan Energy & Agriculture Hub



2007'
Uiwang Complex



2007'
International Master plan Competition
For Public Administration Town



2006'
Paju Unjung District 2 A-20, 21, 24BL
1'st Prize Winner



2006'
Gyeongju Culture & Art Center



2006'
Busan Mandeok5 Apartment Competition
1'st Prize Winner



2006'
Sungnam Yeosu A-1, 2BL Apartment Competiton
1'st Prize Winner



2006'
Dongnam District Shopping Mall
1'st Prize Winner



2006'
Jeongok Prehistory Museum
1'st Prize Winner



2006'
Hwasung Taeon Disrict 3 Apartment
1'st Prize Winner



2006'
Andong Culture & Art Center
1'st Prize Winner



2006'
Sangam DMC Skyscraper
1'st Prize Winner



2006'
Jeonju Inhu Church
1'st Prize Winner



2006'
Daegu Bangcheon Market Reconstruction
1'st Prize Winner



2005'
Gwangju Asian Culture Complex
1'st Prize Winner



2005'
Incheon Nonhyun District1 Apartment
1'st Prize Winner



2005'
Daegu Daehyeon Apartment
1'st Prize Winner



2005'
Seoul Technopark
1'st Prize Winner



2005'
Busan Jeonggwan Hyunjin Evervill
Apartment1'st Prize Winner



2005'
Incheon Yongmaru Apartment Competition
1'st Prize Winner



2005'
Osan Segyo ApartmentOsan Segyo Apartment
1'st Prize Winner



2005'
Seoul Metropolitan Goverment Turn-Key



2005'
Seoul Metropolitan Goverment Idea Competition
1'st Prize Winner



2005'
Sangam District 2 Apartment
1'st Prize Winner



2005'
Sangbong-dong Complex



2005'
Jeonbuk & Jeonju National University
1'st Prize Winner



2005'
International Idea Competition
for The Seoul Performing Arts Center



2005'
Eunpyeong Newtown 2District Turn-Key
1'st Prize Winner



2005'
Eunpyeong Newtown 1District Turn-Key



2005'
Seongbuk-gu District Office



2005'
KORAIL + KRNA New Building



2004'
Geumcheon District Office



2004'
Daejeon SeokChon Apartment
1'st Prize Winner



2004'
Incheon Dongsan Apartment
1'st Prize Winner



2004'
Korea National Housing Corporation
Daegu Kyongbuk Headquarters
1'st Prize Winner



2004'
Osong Biohealth Technopolis Institute
1'st Prize Winner



2004'
Daejeon Eunhaeng-dong Future-X



2003'
Korea Culture & Contents Agency +
Korea Film Archives Center
1'st Prize Winner



2003'
Gangdong Apartment Competition
1'st Prize Winner



2003'
Jangji Apartment Master Plan
1'st Prize Winner



2003'
Jeonju Inhu Apartment Reconstruction



2002'
The National Center
for Korean Traditional Performing Art
1'st Prize Winner



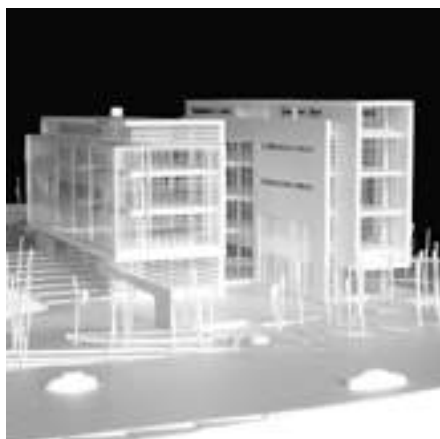
2002'
Yangjae HIBRAND



2002'
Chang-dong Culture
& Sports center Turnkey Competition



2002'
Korea International Exhibition Center
1'st Prize Winner



2002'
Nowon Digital Library



2001'
Yeouido Parksweet



2001'
Ilsan Culture Center



2001'
Air Force Club
1'st Prize Winner



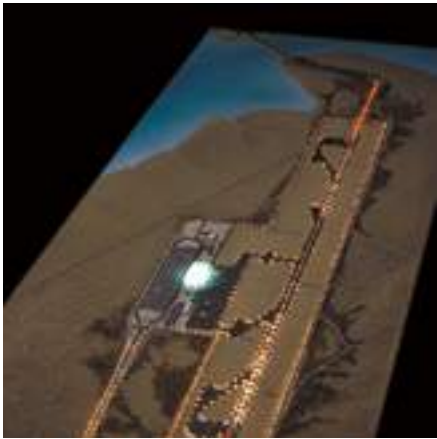
2001'
The National Center
for Korean Namdo Performing Art
1'st Prize Winner



2000'
New Manufactory of Korea Tobacco & Ginseng Corporation
Youngjoo Branch Office



2000'
2002's Worldcup Main Stadium



1999'
Mooan Airport
1'st Prize Winner



1997'
Euljiro Redevelopment
1'st Prize Winner



WONYANG

Architects & Engineers Co., Ltd.

WONYANG Architects & Engineers Co., Ltd.

JJ B/D. Teheran-ro 63-gil 20 Kangnam-gu
Seoul, Korea P.O. Box 135-090
TEL : +82 2 6441 6500 / FAX : +82 2 538 6591

Established Date

19th December, 1981

Registration

Seoul Kang-Nam No.852 for Architect's office
Special of Construction Administration
Engineering Activity Firm
Korean Institute of Registered Architects
Architectural Institute of Korea
The Korea Construction Consulting Engineers Association
The Construction Management Association of Korea
The International Contractors Association of Korea